

City of Elkins Extended Fire Fee Area

Rates:

Rates are the same *inside and outside the city*. Income from the fee may *only be used for the fire department*.

- **Flat rate of \$100** per living unit for all owner-occupied homes and all other residential structures with two or fewer living units. (E.g., a single-family house will be charged \$100; the landlord of a house split into two apartments would pay \$100 per living unit; the landlord of a house split into three apartments would pay the square footage rate, below, just like today.)
- **Square footage rate of \$0.05** (the third step in the fire-fee increase imposed by council in January 2012) for all other improved properties (rentals with three or more units in a building, commercial, industrial, etc.).

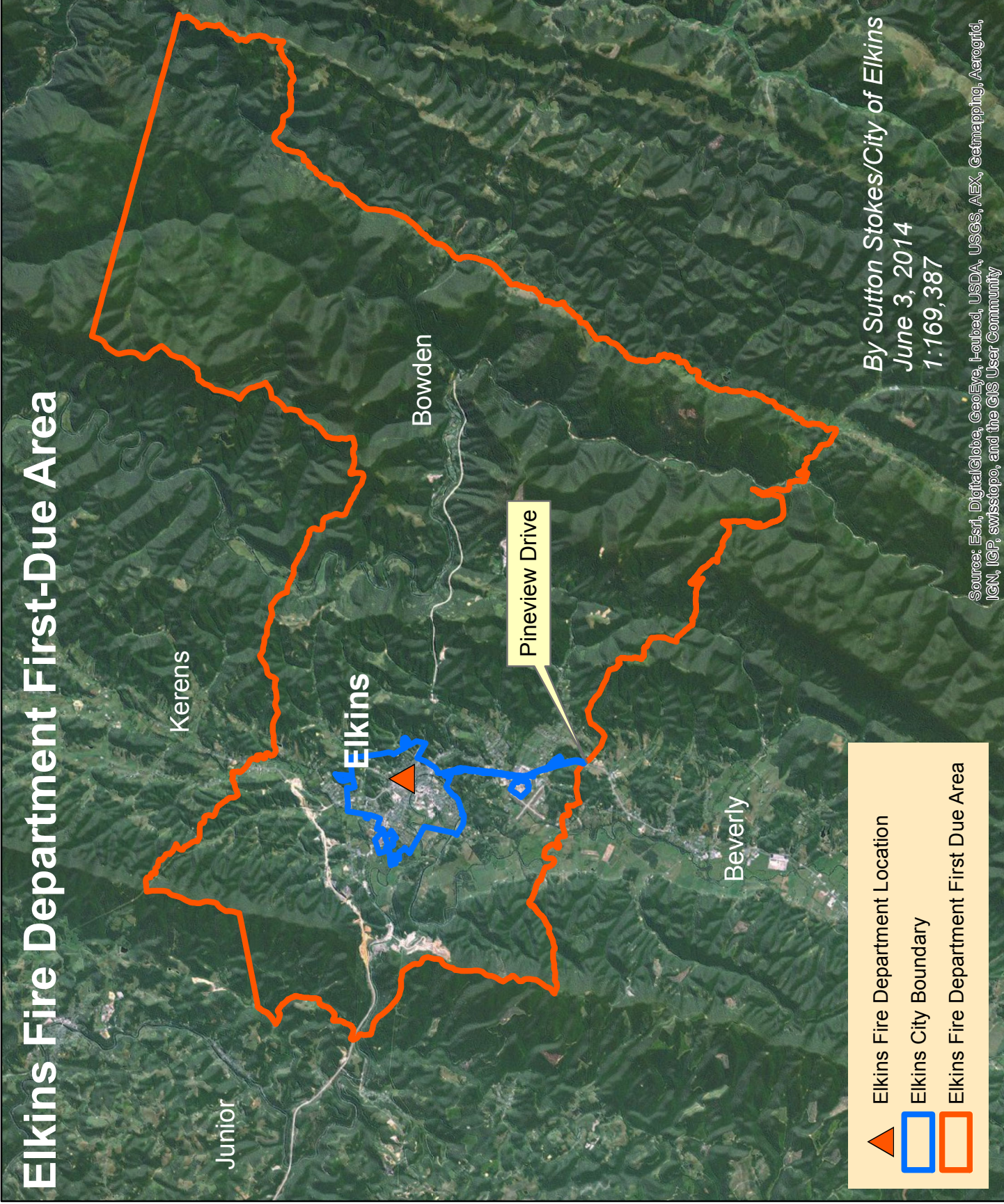
Advantages of extending the fire fee outside Elkins city limits:

- Increased professional staffing
- Increased number of professionals on each shift
- Larger response to fires outside city limits
 - **Without extended fire fee:** can only send 12 firefighters and two engines (2,000 gallons of water)
 - **With extended fire fee:** Can send entire department (up to 28), all four engines, and the aerial with 95-foot ladder (4,000 gallons of water)
- Increased budget for equipment, training, etc.
- Possibility of reduced insurance premiums outside city limits (check with your agent about the advantage of an “improved ISO rating”)

Problems solved by extending the fire fee outside Elkins city limits:

- Decreasing number of volunteers
 - Younger volunteers aren’t signing up
 - Increasingly expensive and time-consuming for volunteers to meet expanding certification requirements
- Stabilized funding
 - Currently @ \$100,000 of FD budget comes from volunteers, via both state/county funding and volunteer fundraising
 - State/county funding could be cut
 - Fundraising might be less successful in some years

Elkins Fire Department First-Due Area



Junior




Kerens

Elkins

Bowden

Pineview Drive

Beverly

-  Elkins Fire Department Location
-  Elkins City Boundary
-  Elkins Fire Department First Due Area

By Sutton Stokes/City of Elkins
June 3, 2014
1:169,387

Source: Esri, DigitalGlobe, GeoEye, Earthstar, USDA, USGS, AEX, Getmapping, Aerogrid, IGN, IGP, swisstopo, and the GIS User Community